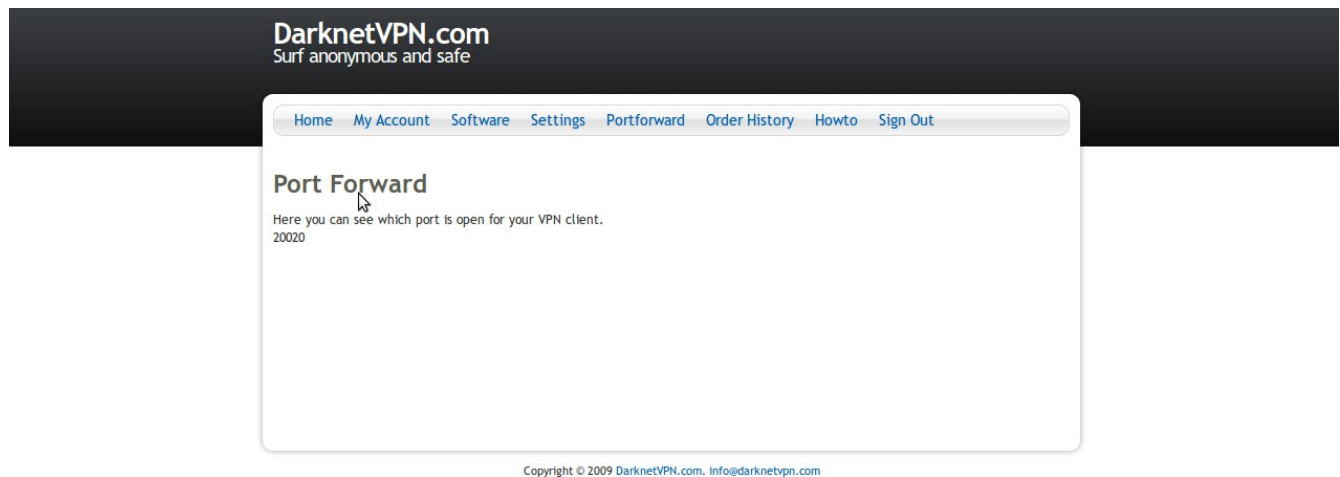


Howto portforward Utorrent

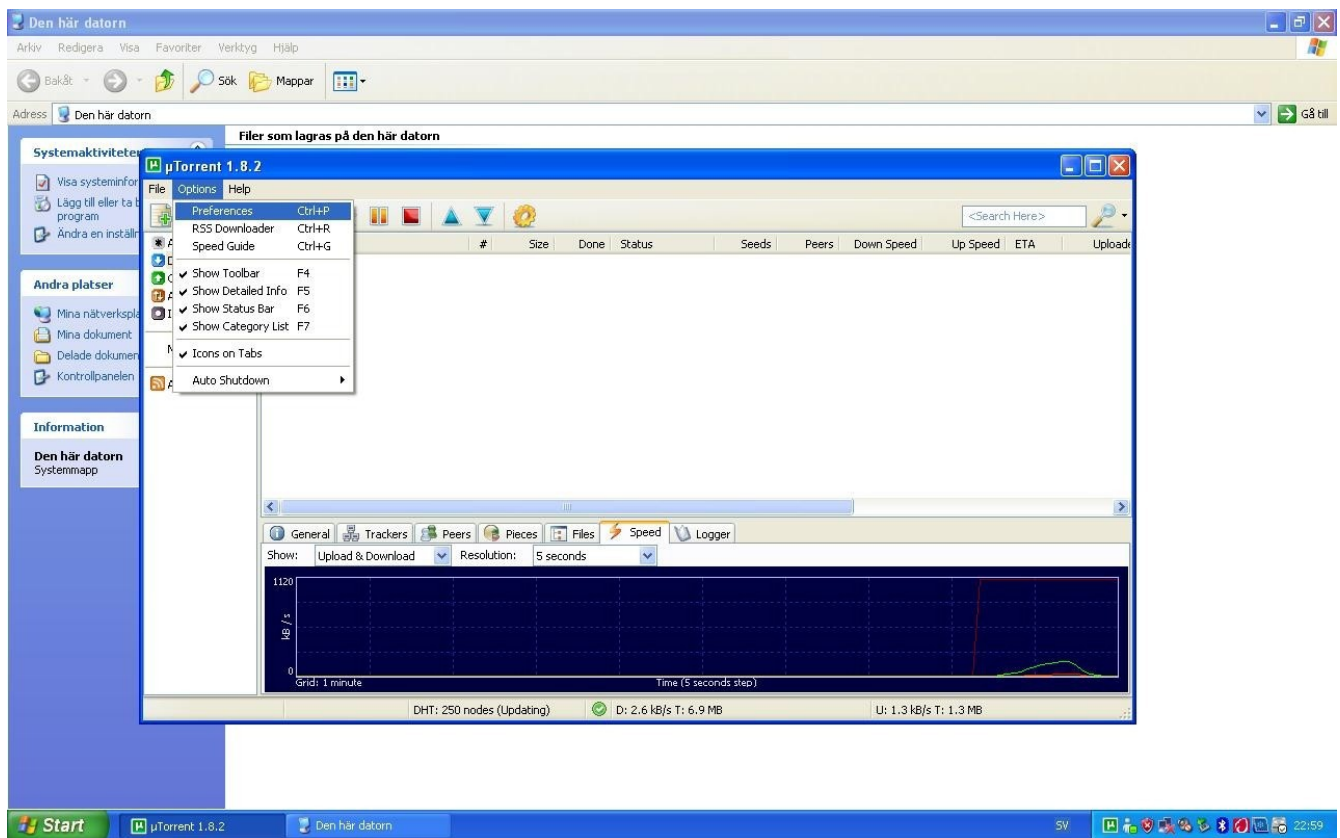
Sign in to the control panel. Then click the port forward link. Here You will find the unique port that you have been allocated.



Then start the Utorrent client.

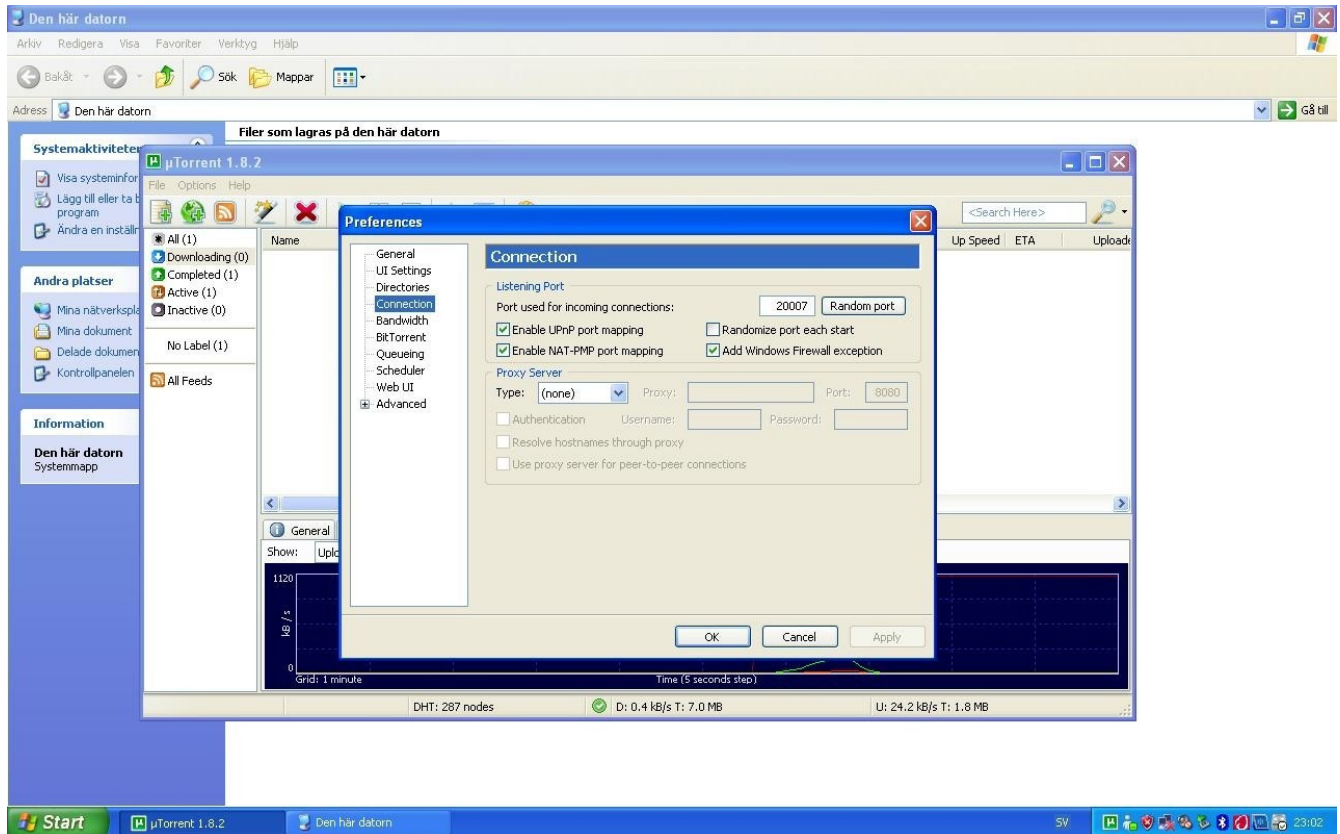


Then click on Options-> Preferences.



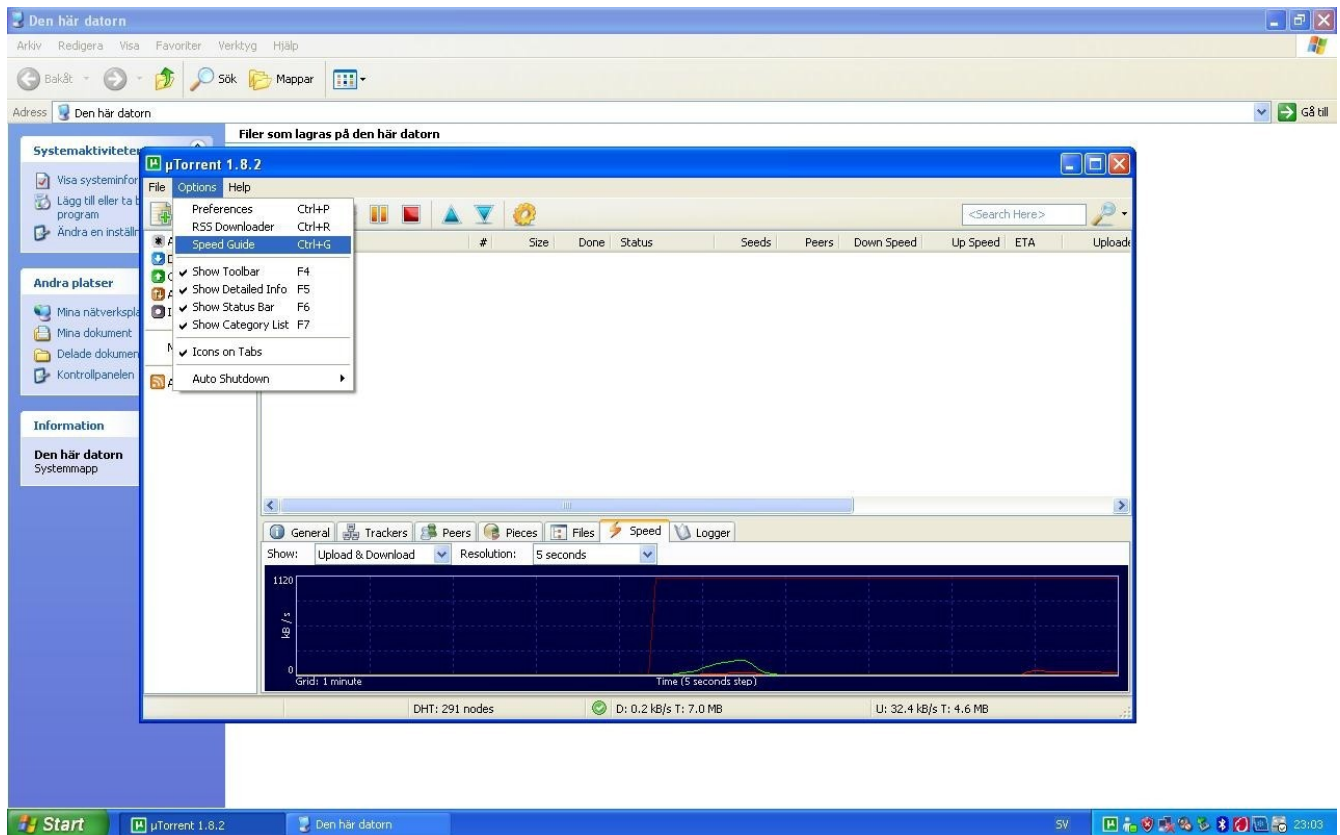
Then click on the connection. In Port used for incoming connections, enter the port you have been allocated under the control panel.

Then press ok.

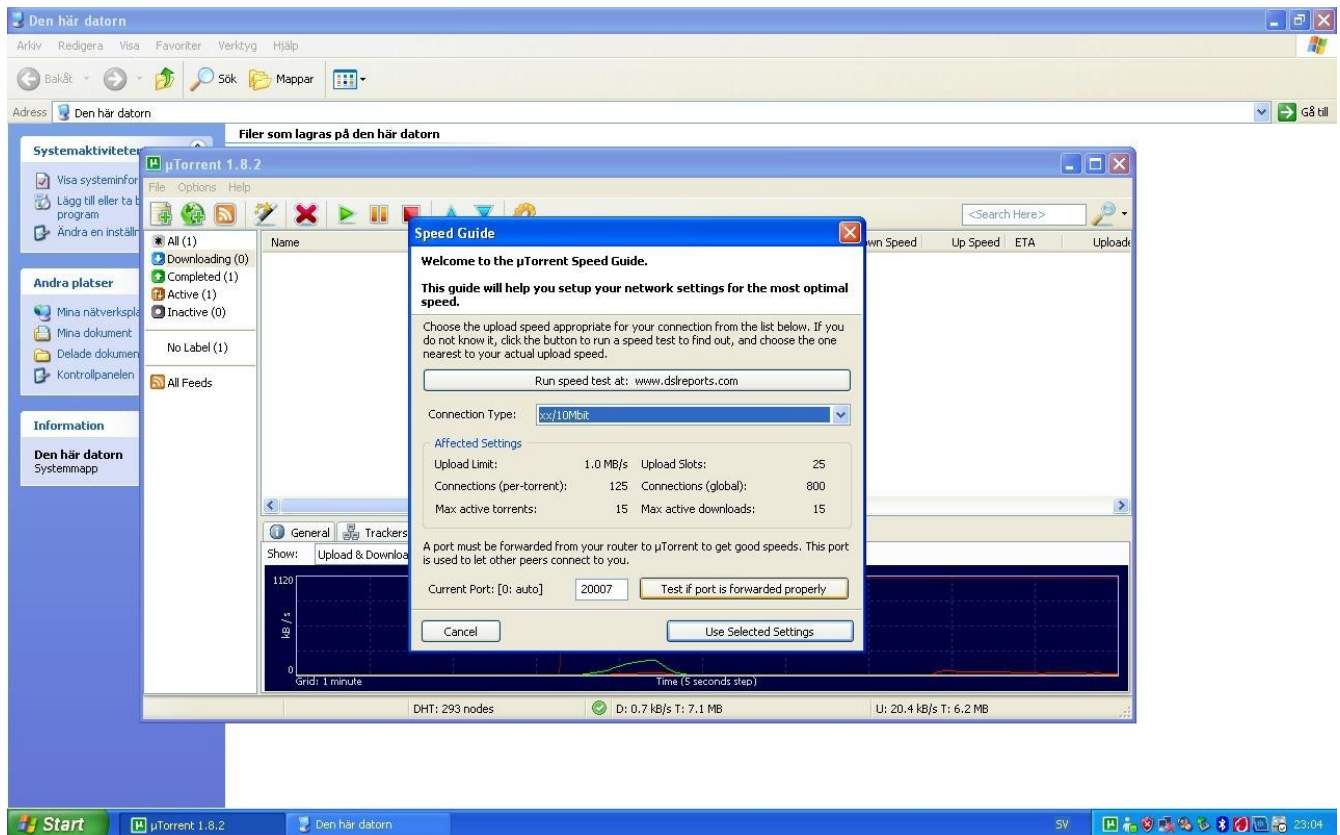


Now the port is added.

To verify that the port is really open and functional. Press Options>Speed Guide in uTorrent.



Then click on test to see if port is forwarded properly, verify also that the correct port is shown at the current port.



You will now be sent to Utorrents website where they will be testing if your port is open and working properly.

The screenshot shows a Mozilla Firefox browser window displaying the uTorrent Port Checker website. The address bar shows the URL <http://www.utorrent.com/testport.php?port=20007>. The page header includes the uTorrent logo and navigation links for Downloads, Support, and Community. A search bar is also present. The main heading is "Welcome to the µTorrent Port Checker". Below this, a message states: "A test will be performed on your computer to check if the specified port is opened." The test result is displayed as "Checking port 20007 on" with a green checkmark icon and the text "OK! Port 20007 is open and accepting connections. You will be able to receive incoming BitTorrent connections." At the bottom, there are five columns of links: Downloads (Get µTorrent, Download beta version, Other Languages), Skins (Vista revamp, Aesthetic Groove, Green and Black glass, Simple Dark), Documentation (µTorrent Help File, Beginner's Guide, Connection Setup Guide, Migrating Your Files), FAQ (1. What are µTorrent's system requirements?..., 2. Is µTorrent open source?..., 3. Is there a Linux or Mac version?..., 4. How do I make µTorrent prioritize...), and Forums (Troubleshooting, Feature Requests, General, Trash). The Windows taskbar at the bottom shows the Start button, the active browser window, and the system tray with the time 23:14.